

# HIGH-QUALITY WIRE CLOTH

## Available in square-footage amounts

Our wire cloth is a metal fabric woven from high-quality alloy wires in a variety of opening sizes and wire diameters. The number of openings per inch constitutes the mesh count or size. For example, a mesh count of 24 x 110 signifies 24 openings per horizontal inch, with 110 openings per vertical inch. When shown as a single number, the mesh count indicates distance from center to center of parallel wires, horizontally and vertically. A wide range of mesh sizes and square footage are available in your choice of plain mesh weave, plain-dutch weave or twilled-dutch weave.

### Uses include:

- Food Sizing and Processing
- Plating Baskets
- Liquid/Particulate Separation
- Chemical Waste Filtration
- Water and Wastewater Treatment
- Silk Screening
- Pharmaceutical Processing
- Laboratory Cages
- Printed Circuit Board Manufacturing

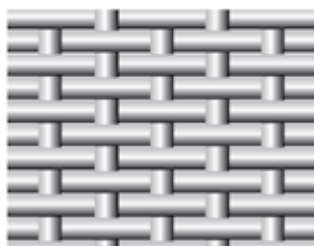
## HOW TO ORDER WIRE CLOTH

Select the desired material and mesh size, as shown in this example: **BRASS, 50x40**

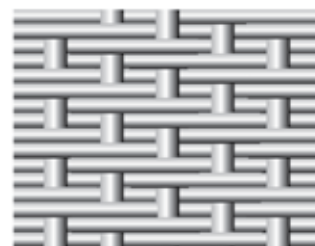
Mesh	Wire Diameter	Width of Opening	% Open Area
<b>ALUMINUM</b>			
18 x 16	0.011		
<b>BRASS</b>			
16 x 16	0.018	0.0445	50.7
24 x 24	0.014	0.0277	44.2
30 x 30	0.011	0.0220	44.9
40 x 36	0.010	0.015/.017	38.3
50 x 40	0.008	0.012/.017	41.0
60 x 50	0.0065	0.0102/.0135	41.4
80 x 70	0.0055	0.0073	22.8
100 x 90	0.0045	0.0055/.0066	32.6
120 x 108	0.0035	0.0050	36.0
<b>BRONZE</b>			
18 x 14	0.011		
150 x 140	0.0026		
150 x 140	0.0026		
<b>STEEL</b>			
16 x 16	0.023	0.0395	39.9
<b>STAINLESS STEEL TYPE 304</b>			
4 x 4	0.035	0.2150	74.0
6 x 6	0.032	0.1320	62.4
8 x 8	0.028	0.0970	60.2
10 x 10	0.025	0.0750	56.3
20 x 20	0.014	0.0360	51.8
30 x 30	0.011	0.0220	44.9
40 x 36	0.009	0.0160	41.0
50 x 40	0.008	0.012/.017	41.0
50 x 246 Twin Warp	0.0045/.0045		
50 x 250 Plain Dutch	0.0055/.0045		
60 x 50	0.0065	0.0102/.0135	41.4
80 x 70	0.0055	0.0073	22.8
100 x 90	0.0045	0.0055/.0066	32.6
120 x 108	0.0035	0.0050	36.0
150 x 140	0.0026		
165 x 800 Twilled Dutch	0.0028/.0018		
200 x 190	0.0021	33.6	
200 x 1400 Twilled Dutch	0.0028/.0016		
325 x 325	0.0014	30.0	
Sheet widths are either 18" or 24". Additional charges for slitting			



PLAIN WEAVE



PLAIN-DUTCH WEAVE



TWILLED-DUTCH WEAVE