



# ProfilGate® for new factories!



NSL NSL Technology Resources (s) Pte Ltd  
No 280 Woodlands Industrial Park E5,  
#09-11 Harvest @ Woodlands,  
Singapore 757322  
Tel : +65 67957477, 7747 Fax : +65 63162368  
Email : sales@nsltechnology.com

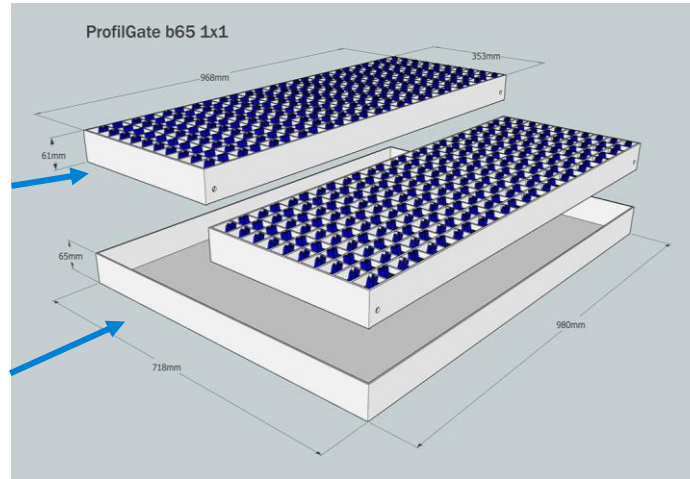
[www.nsltechnology.com](http://www.nsltechnology.com) a product of



# The Principle

## Components

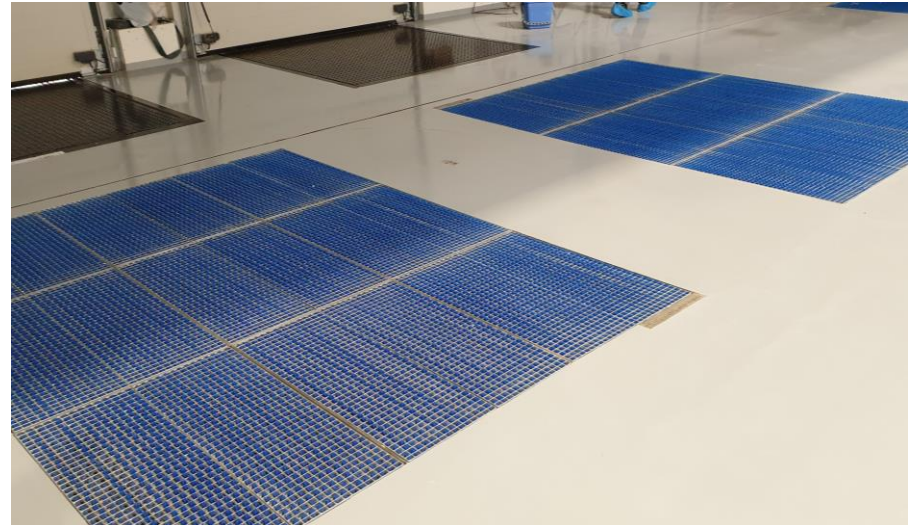
- Separated grates with patented Brush Stripes
- Collection Tray (Stainless Steel) for easy cleaning



The ProfilGate®  
Video is available here:



# Examples from new factories



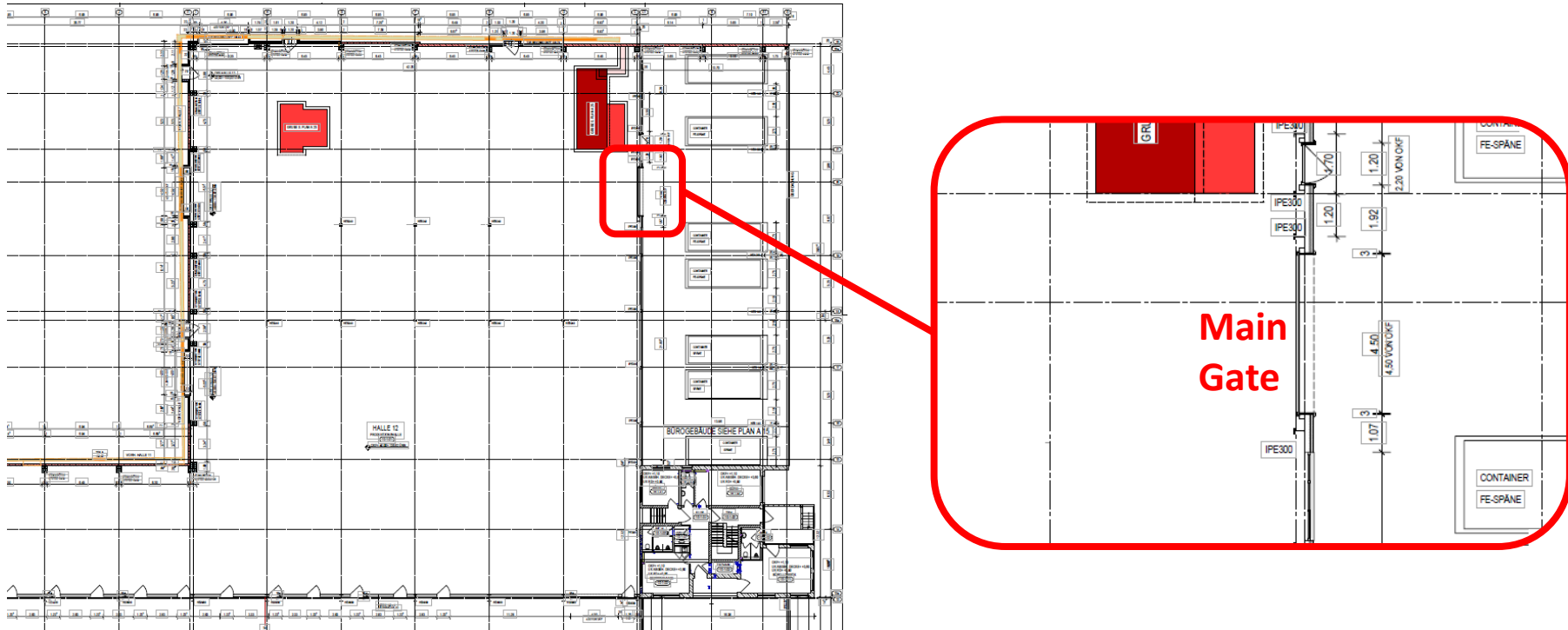
# Why to consider ProfilGate for your new factory?

- Your new factory should last for the next decades. High cleanliness is more important than ever before.
- Higher cleanliness with ProfilGate ensures:
  - Higher quality of your products
  - Less customer complaints
  - Less cleaning costs
  - Longer durability of your floors and lower refurbishing costs
  - Improved health and safety for your employees
- Professional recommendations for a strategic positioning of ProfilGate in your basic logistics concept by our ProfilGate experts.
- Lower installation costs, as the pit can be considered during construction phase (no need to dig into the ground).

*Please check following example from a recent project in Germany!*

# New factory – 1. Step / Planning

Based on the architect's drawing, we can make recommendations where ProfilGate should best be installed.



Please share your architect's drawing with us, so we can provide our best possible support. If you have concerns about confidentiality, we can sign a “non-disclosure agreement”.



# New factory – 3. Step / Leaving the pit

When you decide to install ProfilGate in your new building, the pit for the system can be considered directly from the beginning:

- Cost saving
- No need to dig the pit in the new flooring
- ProfilGate can work from day one of your new operations



# New factory – 4. Step / Covering

To avoid damages of the pit and to make the area accessible to vehicles during that phase, wooden boards can be placed in the pit



# New factory – 5. Step / In operation

When the construction is finished, the trays, grates and brushes can be placed in the existing pit and operation of the new facility can start.



You see that the customer considered the proposal we submitted in the drawing before (5 segments in length, 6 in width)

Thank you for your  
interest and your  
attention!



**NSL** NSL Technology Resources (s) Pte Ltd  
No 280 Woodlands Industrial Park E5,  
#09-11 Harvest @ Woodlands,  
Singapore 757322  
Tel : +65 67957477, 7747 Fax : +65 63162368  
Email : sales@nsltechnology.com

a product of



[www.nsltechnology.com](http://www.nsltechnology.com)