



**NSL Technology Resources (s) Pte Ltd**

No 280 Woodlands Industrial Park E5,

#09-11 Harvest @ Woodlands,

Singapore 757322

Tel : +65 67957477, 7747 Fax : +65 63162368

Email : sales@nsstechnology.com



**ProfilGate®**

Clean Factory Solutions at



**HYUNDAI**

a product of

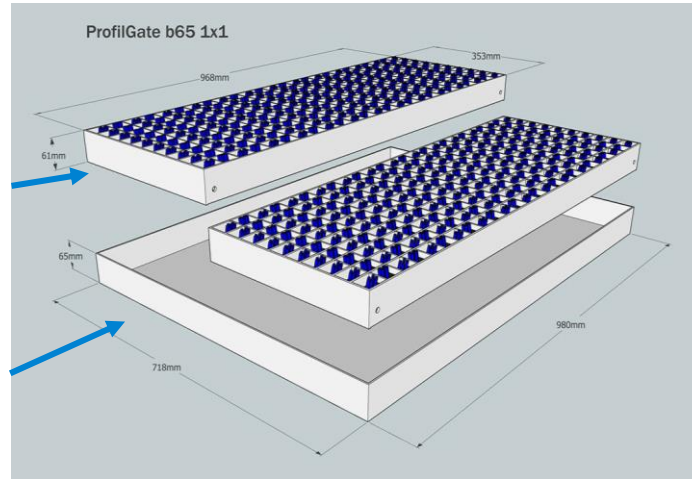


[www.nsltechnology.com](http://www.nsltechnology.com)

# The Principle

## Components

- Separated grates with patented Brush Stripes
- Collection Tray (Stainless Steel) for easy cleaning



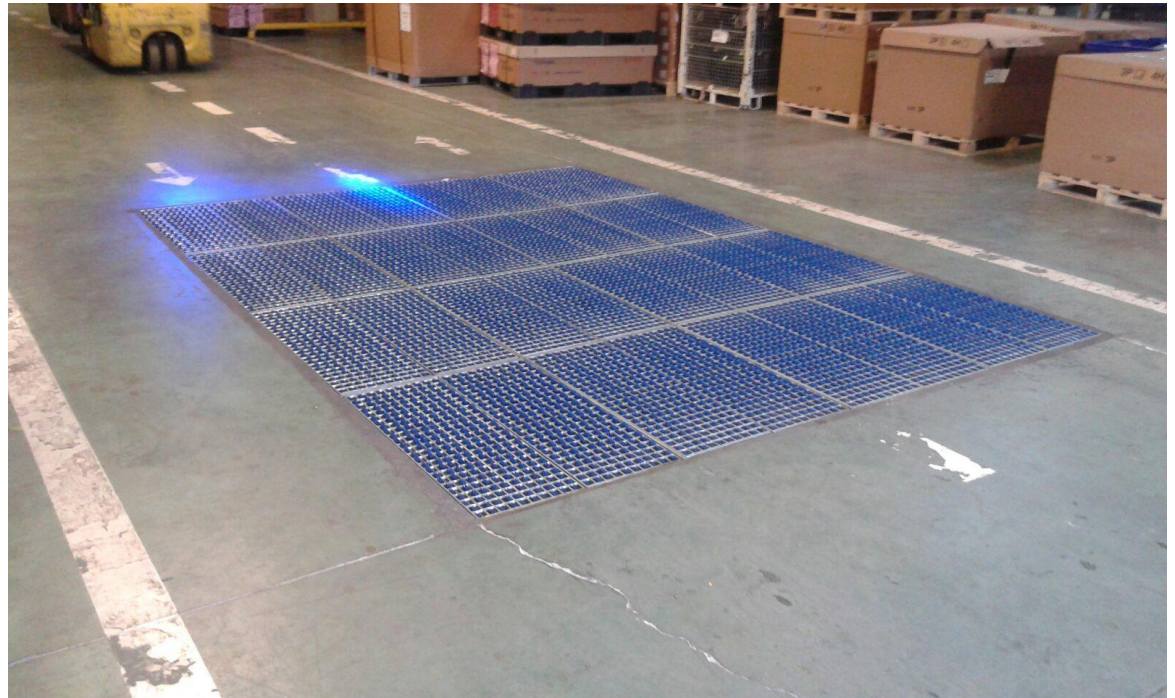
The ProfilGate®  
Video is available here:



# Hyundai plants relying on ProfilGate®

ProfilGate® is already installed in several Hyundai plants, first installation was in Kocaeli (Turkey) in 2015:

- Kocaeli (Turkey)
- Montgomery (USA)
- Tamil Nadu (India)
- Ulsan (Korea)



First installation at factory in Kocaeli in 2015

# ProfilGate® at Hyundai Kocaeli, Turkey

After first succesful installation, Hyundai in Kocaeli installed a second field in front of a main gate for outside to inside traffic.



Second installation at factory in Kocaeli

[www.nsltechnology.com](http://www.nsltechnology.com)

# ProfilGate® at Hyundai Ulsan, Korea

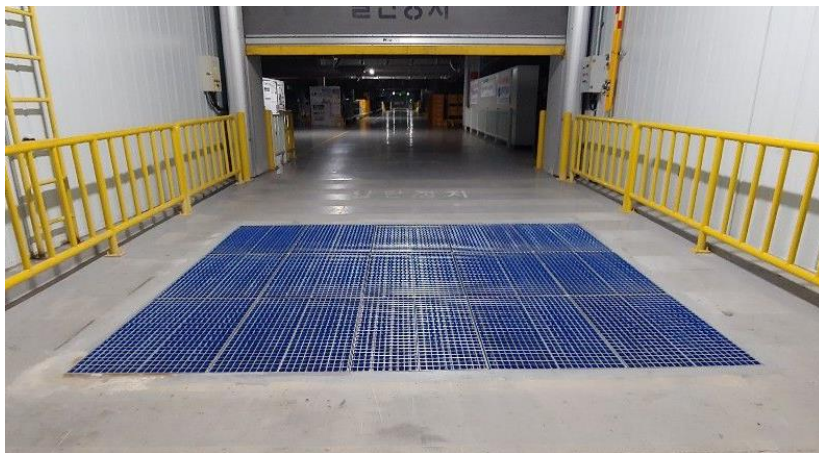
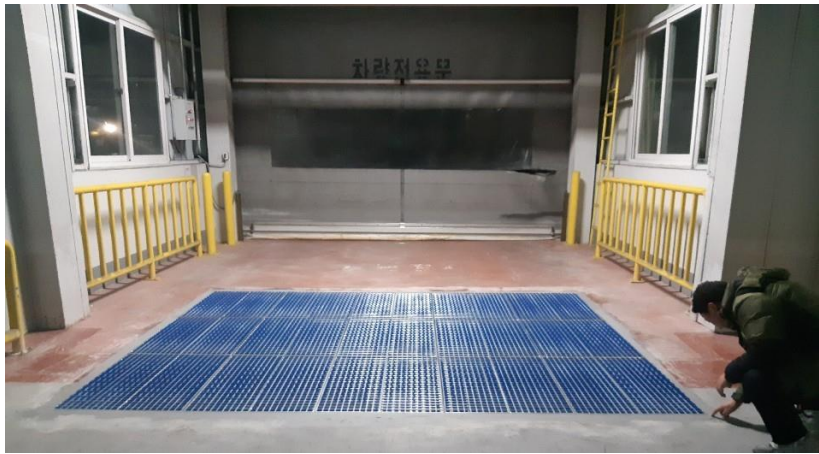
ProfilGate® installations capture moisture, dirt and dust between outside areas and the assembly hall. Tugger trains are in constant movement carrying goods to the line. The dirt from their wheels is safely captured in the ProfilGate® trays.



ProfilGate in Ulsan factory, Korea

# ProfilGate® at Hyundai Ulsan, Korea

Hyundai in Ulsan installed ProfilGate in 8 different areas. ProfilGate is an important factor for their concept to reach a high level of technical cleanliness and product quality!



# References

- The patented ProfilGate® system has gained worldwide acceptance within just 10 years of being on the market.
- It has proved to be a crucial component in all major automotive OEMs and first-tier suppliers in the context of striving for an optimum of so-called “technical cleanliness” throughout the whole value-added chain.

- Selection of customers in the automotive industry using ProfilGate®:



TOYOTA



HYUNDAI



BOSCH



DAIMLER

Visteon®

MAHLE



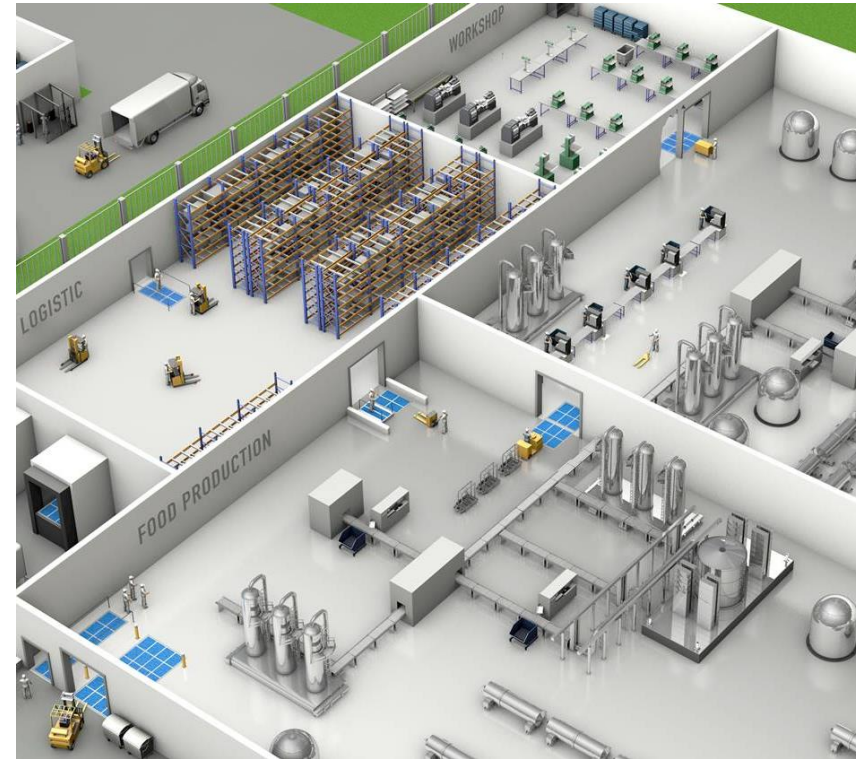
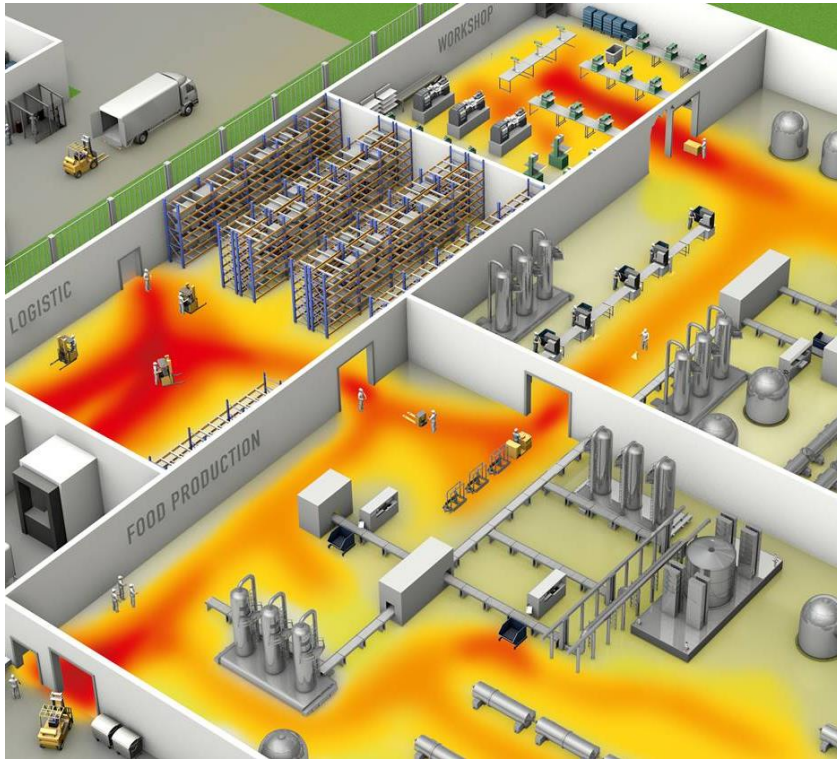
Audi

Continental 

[www.nsltechnology.com](http://www.nsltechnology.com)

 ProfilGate®

# ProfilGate® - The Clean Factory





**NSL** NSL Technology Resources (s) Pte Ltd  
No 280 Woodlands Industrial Park E5,  
#09-11 Harvest @ Woodlands,  
Singapore 757322  
Tel : +65 67957477, 7747 Fax : +65 63162368  
Email : sales@nsltechnology.com

a product of



[www.nsltechnology.com](http://www.nsltechnology.com)